

—ONWARD—

FY02/24 (FY2023)
Results Presentation Material

23  30

ANNIVERSARY
SINCE 1993



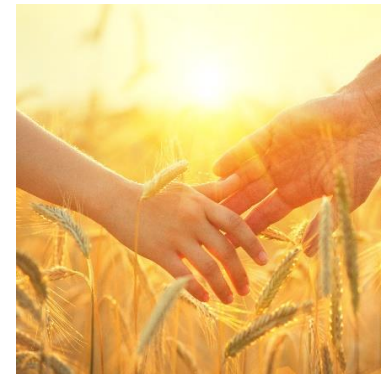
April 4, 2024

ONWARD HOLDINGS CO., LTD.

The Onward Group's Mission Statement

Enriching and Adding Color to People's Lives while Caring for the Planet

Keep moving forward as a “lifestyle and culture creation company” that contributes to creating lifestyles with richness and colors in harmony with the planet through “customer-centric management leveraging employees’ diverse strengths”



01	Consolidated Financial Results and Performance Forecast Highlights	4
02	FY2023 Consolidated Financial Results	8
03	FY2024 Consolidated Performance Forecast	11
04	Financial Situation	14
05	Appendix	17



U N F / L O

24 SPRING & SUMMER

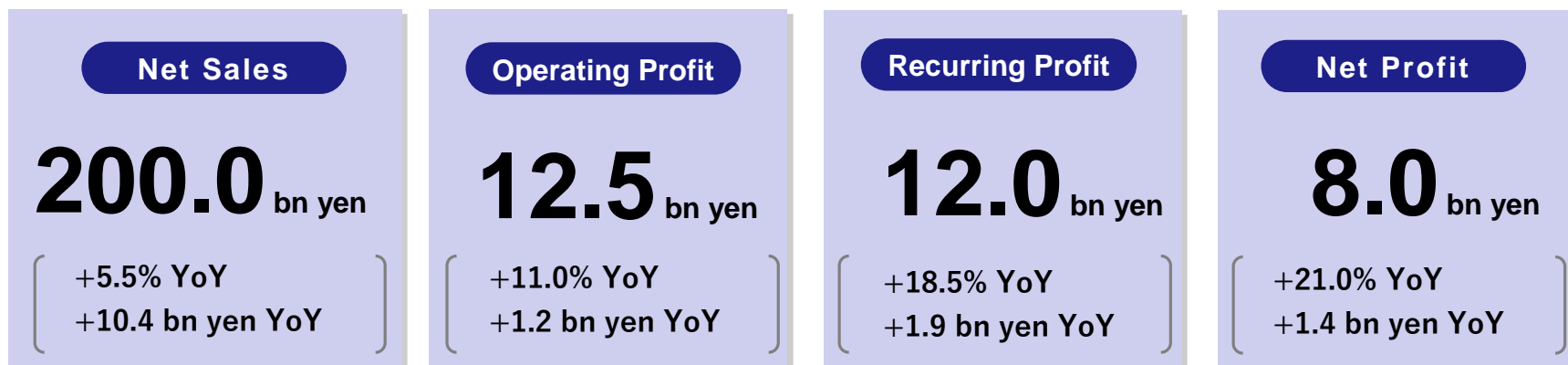
01

**Consolidated Financial Results
and Performance Forecast
Highlights**



- In FY2023, as a result of focusing on customer-oriented product development and strengthening sales and services, existing key brand businesses such as Nijyusanku and PET PARADISE performed well. In addition, new brand businesses such as UNFILO also expanded significantly. Further improvement in the operational capability of OMO stores, which introduced the "Click & Try" service, also contributed to a 7.7% year on year increase in net sales.
- Operating profit margin for FY2023 rose by 2.9 pp year on year (3.0% to 5.9%) due in large part to the achievements of global business reforms and progress in streamlining the product supply chain.
- Thanks to the above, we achieved a significant increase in sales and all kinds of profits in FY2023, with operating profit reaching 11.3 billion yen, the highest since FY2008.

FY2024 : Consolidated Performance Forecasts Highlights



- Consolidated net sales for FY2024 are projected to be 200 billion yen, up 10.4 billion yen year on year, as we expect the domestic business to remain firm and the overseas business to improve, primarily in the European region.
- We expect a further increase in the gross profit margin (from 55.8% to 56.1%) through thorough sales at list prices and appropriate inventory management.
- The SG&A ratio is expected to remain unchanged year on year at 49.8%, due intensive investment in human capital and advertising while implementing thorough streamlining of store operations and other measures.
- Thus, we forecast FY2024 operating profit of 12.5 billion yen, up 1.2 billion yen year on year, recurring profit of 12.0 billion yen, up 1.9 billion yen, and net profit of 8.0 billion yen, up 1.4 billion yen.
Operating profit for FY2024 is expected to be the highest since FY2008 for the second consecutive fiscal year.

Change in dividend policy

The Company regards the return of profits to shareholders as one of its most important management measures and has revised dividend policy to raise the dividend payout ratio of at least 40% from at least 35% previously and to distribute profits in a stable, performance-linked, and appropriate manner.

Dividend forecast for FY2024

Regarding the dividend for FY2024, based on the substantial increase in net profit expected from FY2023, the year-end dividend is forecast to increase by 4 yen from the FY2023 actual to 24 yen per share.

	FY2024 (Forecast)	FY2023 (Results)
Dividends per Share (yen)	24	20
Total Dividends (mil. yen)	3,257	2,714
Net Profit (mil. yen)	8,000	6,611
Payout Ratio	40.7%	41.1%



02

**FY2023 Consolidated
Financial Results**

FY2023 : Consolidated Financial Results

- Net sales increased to 189.6 billion yen, up 13.6 billion yen (+7.7%) YoY.
- Operating profit was 11.3 billion yen, up 6.0 billion yen (2.2 times) YoY.
- Net profit was 6.6 billion yen, up 3.6 billion yen (2.2 times) YoY.
- EBITDA amounted to 16.1 billion yen, up 5.7 billion yen (1.5 times) YoY.

(Million yen)		Full-Year Results						
		FY2023	FY2022	Change	% of Change	Previous Forecast	Change	% of Change
1	Net Sales	189,629	176,072	+13,557	+7.7%	189,211	+418	+0.2%
2	Gross Profit	105,782	96,751	+9,031	+9.3%	105,952	- 170	- 0.2%
	(% of Net Sales)	(55.8%)	(54.9%)		(+0.9%)	(56.0%)		-0.2%
3	SG&A Expenses	94,522	91,537	+2,985	+3.3%	94,930	- 408	- 0.4%
	(% of Net Sales)	(49.8%)	(52.0%)		(- 2.2%)	(50.2%)		(- 0.4%)
4	Operating Profit	11,260	5,214	+6,046	+116.0%	11,022	+238	+2.2%
	(% of Net Sales)	(5.9%)	(3.0%)		(+2.9%)	(5.8%)		(+0.1%)
5	Recurring Profit	10,126	5,319	+4,807	+90.4%	10,012	+114	+1.1%
	(% of Net Sales)	(5.3%)	(3.0%)		(+2.3%)	(5.3%)		(+0.0%)
6	Net Profit	6,611	3,061	+3,550	+116.0%	5,911	+700	+11.8%
	(% of Net Sales)	(3.5%)	(1.7%)		(+1.8%)	(3.1%)		(+0.4%)
7	EBITDA[※]	16,052	10,373	+5,679	+54.7%	16,100	- 48	- 0.3%
	(% of Net Sales)	(8.5%)	(5.9%)		(+2.6%)	(8.5%)		(+0.0%)

*Note: EBITDA = operating profit + depreciation and amortization.

FY2023 : Results by Segment

- In the domestic business, both the apparel and lifestyle segments saw higher sales and double-digit profit growth.
- In the overseas business, operating profit/loss improved by 0.9 billion yen, although an operating loss of 0.2 billion yen remained.

(Million yen)			Full-Year Results						
			FY2023	FY2022	Change	% of Change	Previous Forecast	Change	% of Change
1	Apparel	Net Sales	140,267	129,525	+10,742	+8.3%	139,692	+575	+0.4%
		Operating Profit	9,679	5,000	+4,679	+93.6%	9,753	- 74	- 0.8%
2	Lifestyle	Net Sales	39,791	37,926	+1,865	+4.9%	39,633	+158	+0.4%
		Operating Profit	3,480	2,741	+739	+27.0%	3,374	+106	+3.1%
3	Domestic Total	Net Sales	180,058	167,451	+12,607	+7.5%	179,325	+733	+0.4%
		Operating Profit	13,159	7,741	+5,418	+70.0%	13,127	+32	+0.2%
4	Overseas Total	Net Sales	19,927	17,250	+2,677	+15.5%	20,348	- 421	- 2.1%
		Operating Profit	- 211	- 1,090	+879	↗	- 315	+104	↗
5	Consolidated Total	Net Sales	189,629	176,072	+13,557	+7.7%	189,211	+418	+0.2%
		Operating Profit	11,260	5,214	+6,046	+116.0%	11,022	+238	+2.2%

Note: The group breakdown is calculated using simple sums. Consolidated totals are after eliminating intergroup transactions.

i c b



03

**FY2024 Consolidated Performance
Forecast**

FY2024 : Consolidated Performance Forecast

- Gross profit margin is expected to improve by 0.3 pp from FY2023 to 56.1%.
- SG&A expense ratio is forecast to be 49.8%, the same level as FY2023.
- EBITDA is estimated to increase 1.6 billion yen from FY2023 to 17.7 billion yen.

(Million yen)		Full-Year Forecast			
		FY2024	FY2023	Change	% of Change
1	Net Sales	200,000	189,629	+10,371	+5.5%
2	Gross Profit	112,100	105,782	+6,318	+6.0%
	(% of Net Sales)	(56.1%)	(55.8%)		(+0.3%)
3	SG&A Expenses	99,600	94,522	+5,078	+5.4%
	(% of Net Sales)	(49.8%)	(49.8%)		(+0.0%)
4	Operating Profit	12,500	11,260	+1,240	+11.0%
	(% of Net Sales)	(6.3%)	(5.9%)		(+0.4%)
5	Recurring Profit	12,000	10,126	+1,874	+18.5%
	(% of Net Sales)	(6.0%)	(5.3%)		(+0.7%)
6	Net Profit	8,000	6,611	+1,389	+21.0%
	(% of Net Sales)	(4.0%)	(3.5%)		(+0.5%)
7	EBITDA[※]	17,700	16,052	+1,648	+10.3%
	(% of Net Sales)	(8.9%)	(8.5%)		(+0.4%)

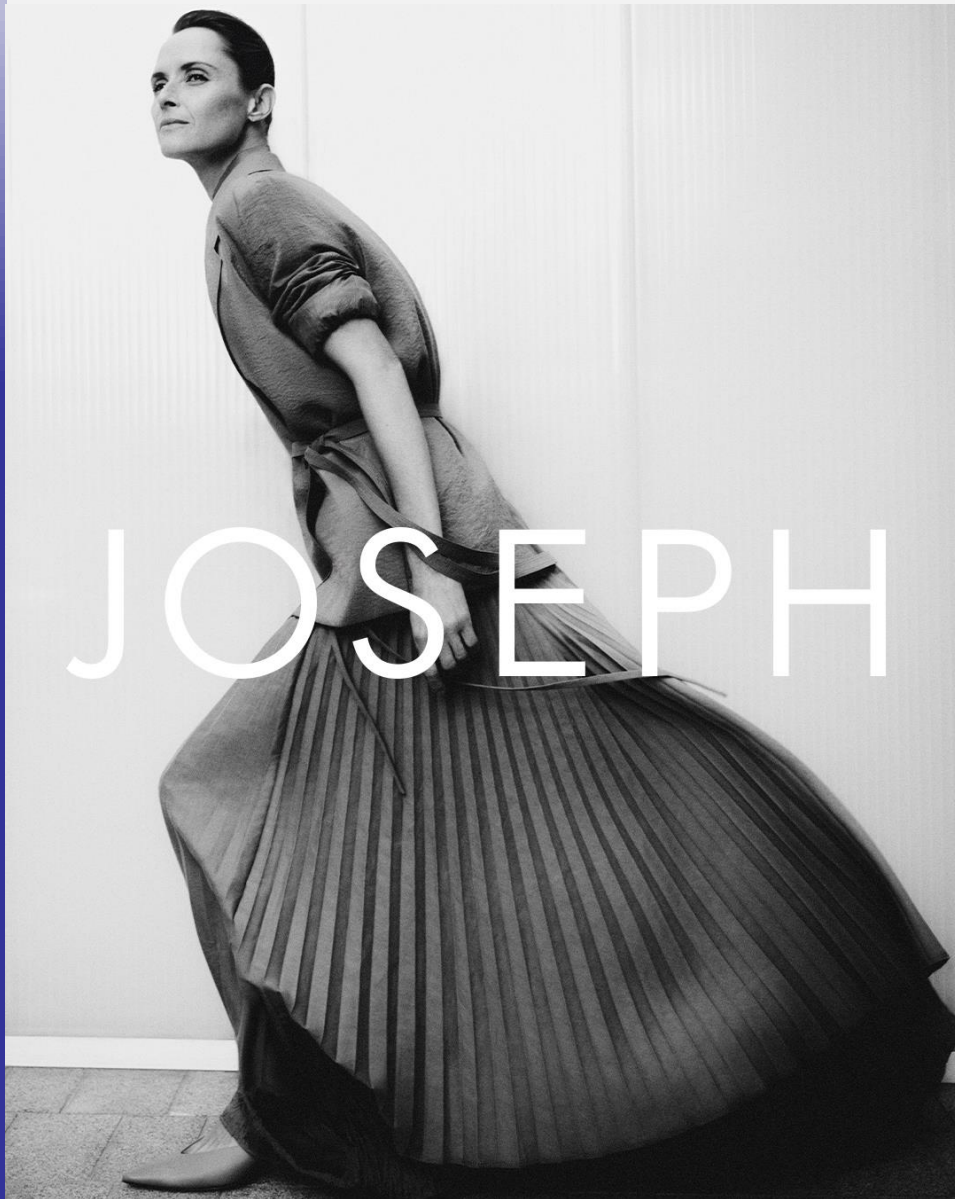
*Note: EBITDA = operating profit + depreciation and amortization.

FY2024 : Performance Forecasts by Segment

- For the domestic business, net sales are expected to increase by 10.3 billion yen (+5.7%) and operating profit by 1.3 billion yen (+9.5%).
- In the overseas business, net sales are expected to increase by 2.0 billion yen (+10.2%) and operating profit/loss to return to the black of 0.3 billion (+0.5 billion yen).

(Million yen)		Full-Year Forecast				
		FY2024	FY2023	Change	% of Change	
1	Domestic Total	Net Sales	190,332	180,058	+10,274	+5.7%
		Operating Profit	14,410	13,159	+1,251	+9.5%
2	Overseas Total	Net Sales	21,966	19,927	+2,039	+10.2%
		Operating Profit	321	- 211	+532	↗
3	Consolidated Total	Net Sales	200,000	189,629	+10,371	+5.5%
		Operating Profit	12,500	11,260	+1,240	+11.0%

Note: The segment breakdown is calculated using simple sums. Consolidated totals are after eliminating intergroup transactions.



04

Financial Situation

FY2023 : EBITDA, Net Assets, Shareholder's Equity Ratio, Current Ratio

- EBITDA increased to 16.1 billion yen, up 5.7 billion yen YoY.
- Net assets decreased slightly from the end of the previous fiscal year due to the decrease in minority interests.
- The shareholders' equity ratio was 46.6%, down 0.4 pp from the end of the previous fiscal year.
- The current ratio was 117.7%, up 0.5 pp from the end of the previous fiscal year.

EBITDA

(Million yen)

FY2023	FY2022	Change	% of Change
16,052	10,373	+5,679	+54.7%

Shareholders' Equity Ratio

End-FY2023	End-FY2022	Change
46.6%	47.0%	- 0.4%

Net Assets

(Million yen)

End-FY2023	End-FY2022	Change	% of Change
84,995	85,073	- 78	- 0.1%

Current Ratio

End-FY2023	End-FY2022	Change
117.7%	117.2%	+0.5%

FY2023 : Cash Flows, Capital Expenditures, Depreciation and Amortization

Cash Flows

- Cash flows provided by operating activities amounted to 4.0 billion yen mainly due to higher profit before income taxes and an increase in inventories.
- Cash flows used in investing activities amounted to 4.3 billion yen mainly due to the acquisition of investment securities.
- Cash flows provided by financing activities came to 0.3 billion yen mainly due to an increase in borrowings and the payment of dividends.

Capital Expenditures

- Capital expenditures were 4.6 billion yen, down 0.3 billion yen YoY.
- Carefully select investments such as those related to DX and OMO to make efficient investments.

(Million yen)

FY2023	FY2022	Change	% of Change
4,613	4,921	- 308	- 6.3%

Depreciation and Amortization

- Depreciation and Amortization were 4.0 billion yen, down 0.4 billion yen YoY.

(Million yen)

FY2023	FY2022	Change	% of Change
3,978	4,366	- 388	- 8.9%



NAVE

05

Appendix

OMO Service “Click & Try” Multi-Brand Store “ONWARD CROSSET / SELECT”

- “Click & Try” Service
 - The number of stores offering the service increased to 397, up 57 from the end of the previous fiscal year, and the ratio of stores offering the service rose 16 pp to 58%.
 - In FY2023, net sales at existing stores offering this service were 16% higher than those in FY2019, which was before the COVID-19 pandemic, and 25% higher than those at the stores not offering the service.
- ONWARD CROSSET / SELECT
 - In addition to "Click & Try," the Company expanded the development of "ONWARD CROSSET / SELECT" (OCS), a multi-brand store.
 - With OMO services implemented, the store offers an assortment of Onward Kashiwara's multiple brands across their boundaries.
The year-on-year growth in sales for FY2023 was 22% higher than the existing stores excluding OCS.

Changes in the number of stores that offered Click & Try and the number of reservations

	End-FY2023	End-FY2022	Change	% of Change
Number of Stores	397	340	+57	-
Adoption rate	58%	42%	+16%	-
Number of reservations (in thousands)	126	94	+32	+34%

Comparison of net sales between stores that introduced and have not introduced Click & Try

Comparison with FY2019	FY2023	FY2022
Stores that introduced the service	116%	100%
Stores that have not introduced the service	91%	81%
Effect	+25%pt	+19%pt

ONWARD CROSSET / SELECT sales comparison

	FY2023		
	Department Stores(YoY)	Shopping Centers(YoY)	Total (YoY)
ONWARD CROSSET SELECT(OCS)	122%	154%	130%
Existing Stores Total excl. OCS	110%	101%	108%
Difference	12%pt	53%pt	22%pt

Comparison excluding discontinued brands



ONWARD CROSSET SELECT AEON MALL Kakamigahara Inter

FY2023 : Net Sales by Channel

- Net sales at physical stores total (department stores + shopping centers and others) increased by 7% YoY.
- E-commerce sales increased by 7% YoY. The e-commerce ratio and the directly managed e-commerce ratio remained at a high level at 30% and 86%, respectively.

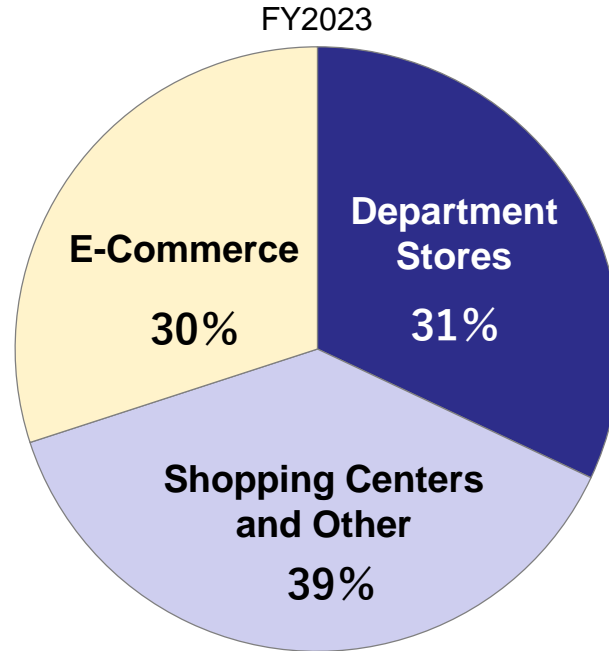
(Million yen)	(1) Onward Kashiwama			(2) Eight Domestic Subsidiaries Using E-Commerce*			Total ((1) + (2))		
	Net Sales	% of Sales	YoY	Net Sales	% of Sales	YoY	Net Sales	% of Sales	YoY
Department Stores	41,517	37.9%	+4.2%	7,496	14.8%	- 23.5%	49,013	30.6%	- 1.2%
Shopping Centers and Other	36,616	33.4%	+13.0%	26,697	52.8%	+18.1%	63,313	39.6%	+15.1%
Physical Stores Total	78,133	71.4%	+8.2%	34,193	67.6%	+5.5%	112,326	70.2%	+7.3%
Directly Managed E-Commerce	27,332	25.0%	+8.6%	13,634	27.0%	+2.4%	40,966	25.6%	+6.4%
Directly Managed E-Commerce Ratio		87.2%			83.3%			85.9%	
Other E-Commerce Platforms	4,026	3.7%	+8.9%	2,724	5.4%	+4.6%	6,750	4.2%	+7.1%
E-Commerce Total	31,358	28.6%	+8.6%	16,358	32.4%	+2.7%	47,716	29.8%	+6.5%
Total Sales	109,491	100.0%	+8.3%	50,551	100.0%	+4.6%	160,042	100.0%	+7.1%

*Note: Total of eight domestic subsidiaries using e-commerce
(Island, Tiaclasse, Onward Personal Style, Chacott, Creative Yoko, Yamato, Intimates, KOKOBUY)

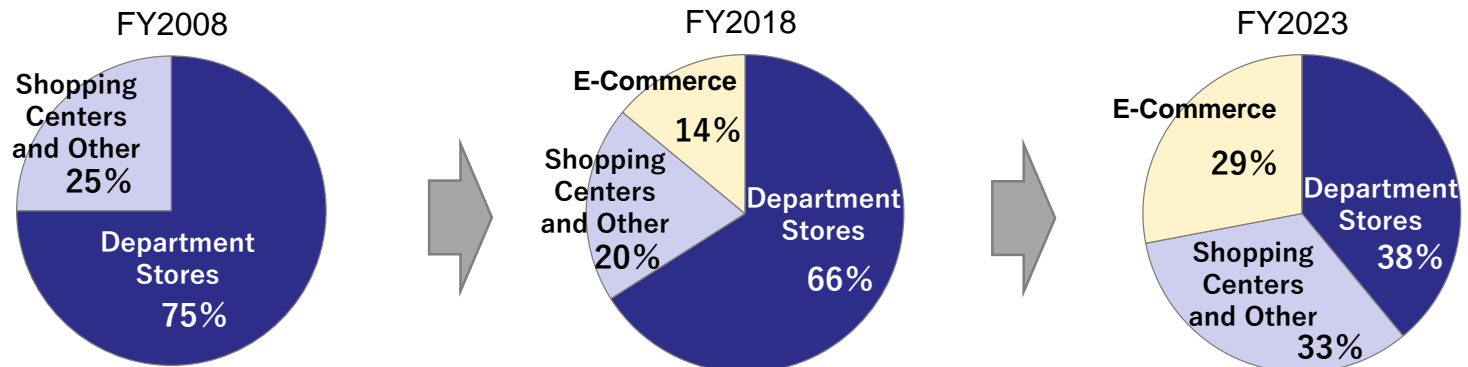
FY2023 : Net Sales Breakdown by Channel

Total of Onward Group's nine domestic companies

(Onward Kashiyama, Island, Tiaclasse, Onward Personal Style, Chacott, Creative Yoko, Yamato, Intimates, KOKOBUY)

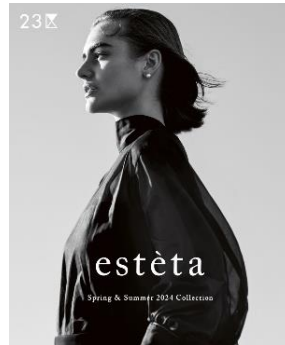


Changes in Onward Kashiyama's sales breakdown by channel



Nijyusanku 【Onward Kashiya】

Onward Kashiya's core brand "Nijyusanku" continued to record higher sales. Sales promotion was stepped up by a campaign to celebrate the 30th anniversary of its brand debut. The Company launched a new high-grade derivative brand "estèta."



FY2023 Sales
(YoY) **+ 15.5%**

23x

UNFILO 【Onward Kashiya】

The brand continued on a growth trajectory thanks to the development of highly unique products with "functional beauty" and the effectiveness of digital sales promotions such as the distribution of advertising videos for its popular jogging pants. Also, the brand is available in more OMO stores.



FY2023 Sales
(YoY) **1.9 x**

UNFILO

Chacott COSMETICS 【Chacott】

In 2021, the brand was given a broad facelift which consisted of items of an everyday-use version of the cosmetics loved as classic ballet stage makeup. Sales grew 1.35 times YoY in FY2023.



FY2023 Sales
(YoY) **+ 34.7%**

Chacott
COSMETICS

PET PARADISE 【Creative Yoko】

The new store opening measures were successful, and all new stores opened in 2023 performed better than planned. New hit products such as carts, leashes, and sundries also contributed to sales growth.



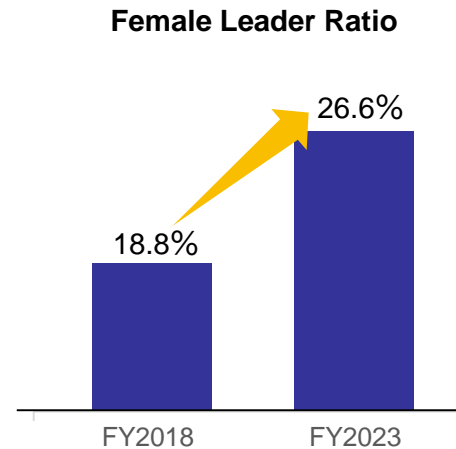
FY2023 Sales
(YoY) **+ 17.2%**

PET PARADISE

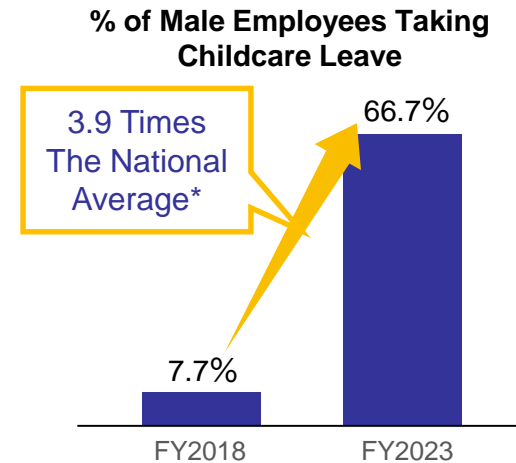
Promotion of initiatives for diversity and Work Style Design

- We are strengthening the development of female leaders as a part of the promotion of diversity. In FY2023, the ratio of female leaders rose to 26.6% from 18.8% in FY2018.
- Through the promotion of Work Style Design, average overtime hours per month in FY2023 decreased by 40% compared to FY2018, and the number of paid leave days taken per year increased by 9.4 days.
- We are encouraging employees to take childcare leave through the establishment of the "Guidebook for Supporting Balance Between Work and Childcare." In FY2023, the ratio of male employees taking childcare leave reached 66.7%, 3.9 times the national average.

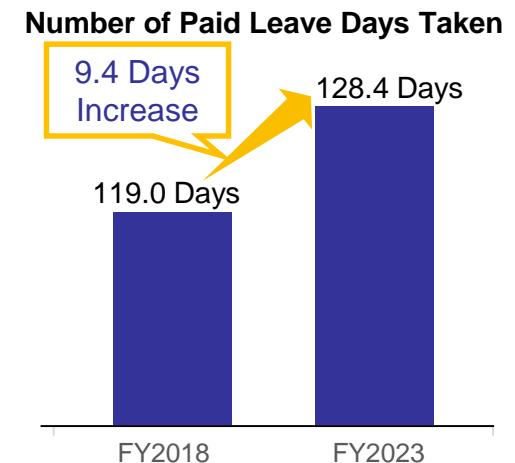
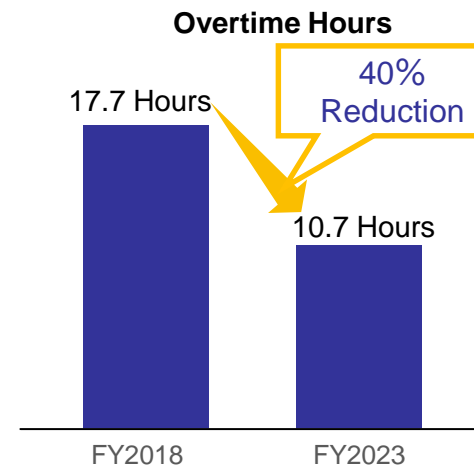
* Comparison between the previous year (FY2018) when "Work Style Design" was launched and FY2023.



*Female leader refers to Manager, Section Manager and General Manager among in career-track positions at Onward Kashiyama Co. Ltd.



(Note) The national average "ratio of male employees of childcare leave" in FY2022 was 17.13%



■ Onward Green Campaign

The Onward Green Campaign aims to create a circular system by recycling and reusing clothing.

Approximately 9.2% of annual production was collected in FY2023, and approximately 7.82 million items have been collected cumulatively since the program was launched in 2009. Collected clothing is used for resale at “Onward Reuse Park Kichijoji” and support of disaster areas by recycling it into items such as blankets and work gloves.

■ Upcycle Action for collected clothing

"Upcycle Action", in which collected clothing is given a new life was launched in FY2023.

The Company's employees became creators and produced approximately 150 upcycled products using collected denim. In March 2024, we held an exhibition and sales event showcasing these products.



Onward Reuse Park Kichijoji (left: exterior, right: interior)

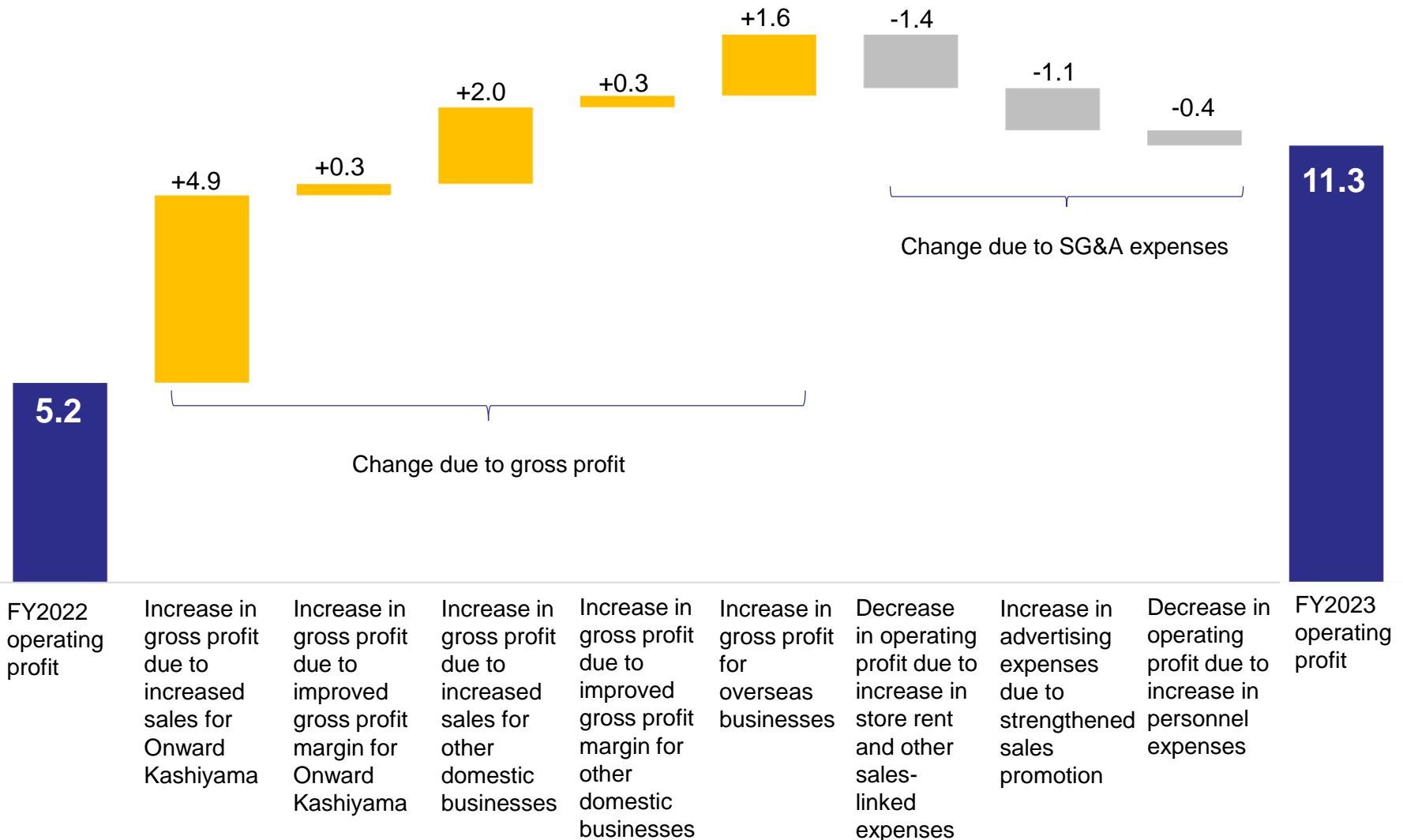
• Upcycle Action •



Upcycled products

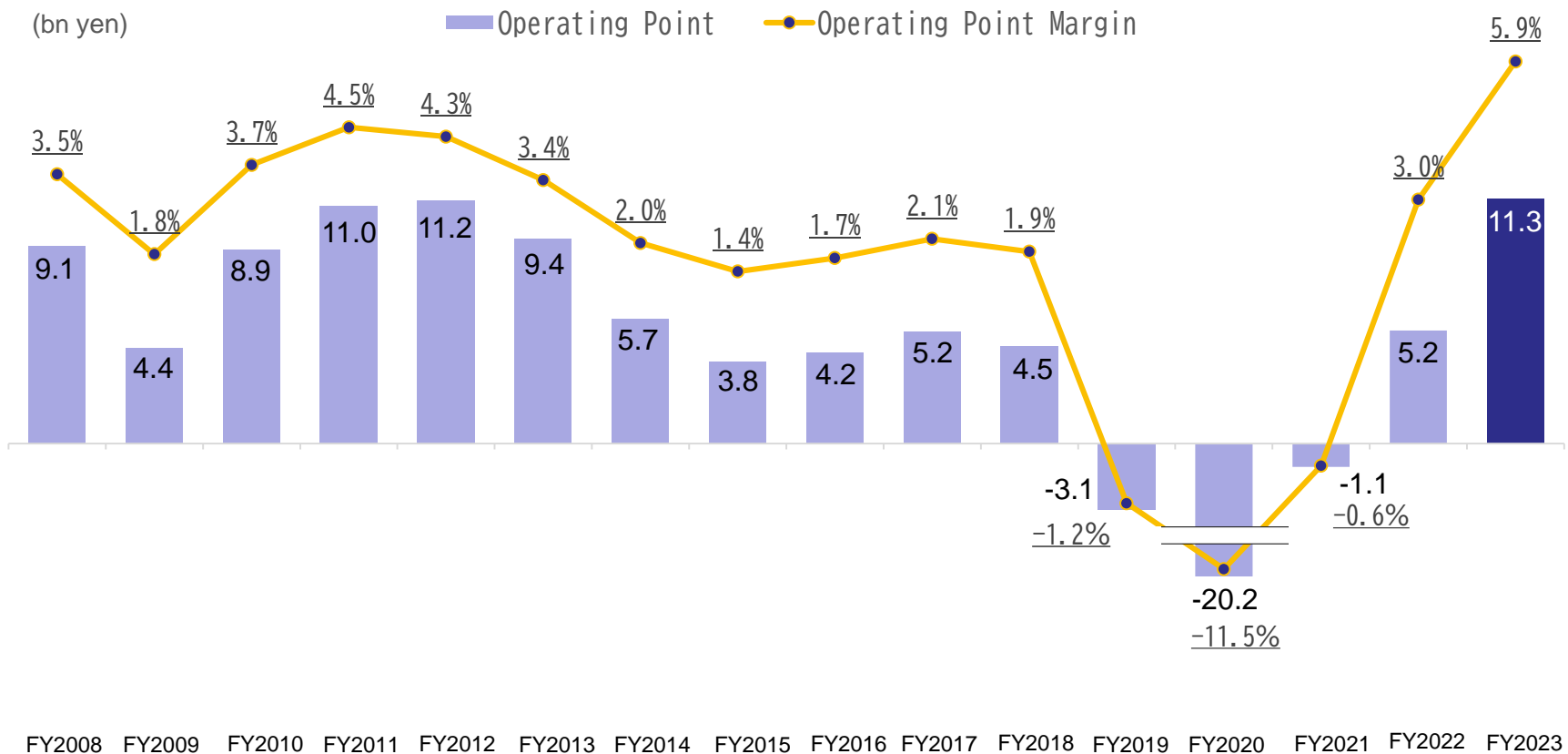
FY2023 : Operating Profit Change Analysis (YoY)

(Billion yen)



Trends of Operating Profit and Operating Profit Margin

- Operating profit in FY2023 was 11.3 billion yen, the highest since FY2008.
- The operating profit margin in FY2023 was 5.9%, the highest since FY2008.



Note: New revenue recognition standards have been applied since FY2020.

FY2023 : Results by Company

(Million yen)			Full-Year Results						
			FY2023	FY2022	Change	% of Change	Previous Forecast	Change	% of Change
1	Onward Kashiyama+HD	Net Sales	109,491	101,109	+8,382	+8.3%	108,721	+770	+0.7%
		Operating Profit	8,189	4,524	+3,665	+81.0%	8,180	+9	+0.1%
2	Onward	Net Sales	16,332	14,503	+1,829	+12.6%	16,549	- 217	- 1.3%
		Operating Profit	1,482	1,007	+475	+47.2%	1,513	- 31	- 2.0%
3	Island	Net Sales	5,716	6,285	- 569	- 9.1%	5,966	- 250	- 4.2%
		Operating Profit	- 83	80	- 163	↘	67	- 150	↘
5	Domestic Apparel Total	Net Sales	140,267	129,525	+10,742	+8.3%	139,692	+575	+0.4%
		Operating Profit	9,679	5,000	+4,679	+93.6%	9,753	- 74	- 0.8%
6	Chacott	Net Sales	9,613	8,849	+764	+8.6%	9,586	+27	+0.3%
		Operating Profit	649	342	+307	+89.8%	654	- 5	- 0.8%
7	Creative Yoko	Net Sales	6,486	5,801	+685	+11.8%	6,391	+95	+1.5%
		Operating Profit	660	419	+241	+57.5%	649	+11	+1.7%
8	Yamato	Net Sales	21,037	20,629	+408	+2.0%	20,889	+148	+0.7%
		Operating Profit	1,728	1,489	+239	+16.1%	1,729	- 1	- 0.1%
9	Domestic Lifestyle Total	Net Sales	39,791	37,926	+1,865	+4.9%	39,633	+158	+0.4%
		Operating Profit	3,480	2,741	+739	+27.0%	3,374	+106	+3.1%
10	Domestic Subtotal	Net Sales	180,058	167,451	+12,607	+7.5%	179,325	+733	+0.4%
		Operating Profit	13,159	7,741	+5,418	+70.0%	13,127	+32	+0.2%
11	Europe	Net Sales	11,355	9,960	+1,395	+14.0%	11,497	- 142	- 1.2%
		Operating Profit	156	- 136	+292	↗	76	+80	+105.3%
12	America	Net Sales	1,890	1,636	+254	+15.5%	2,036	- 146	- 7.2%
		Operating Profit	- 414	- 576	+162	↗	- 321	- 93	↘
13	Asia	Net Sales	6,682	5,654	+1,028	+18.2%	6,815	- 133	- 2.0%
		Operating Profit	47	- 378	+425	↗	- 70	+117	↗
14	Overseas Subtotal	Net Sales	19,927	17,250	+2,677	+15.5%	20,348	- 421	- 2.1%
		Operating Profit	- 211	- 1,090	+879	↗	- 315	+104	↗
15	Consolidated Total	Net Sales	189,629	176,072	+13,557	+7.7%	189,211	+418	+0.2%
		Operating Profit	11,260	5,214	+6,046	+116.0%	11,022	+238	+2.2%

Note: The group breakdown is calculated using simple sums. Consolidated totals are after eliminating intergroup transactions.

FY2024 : Consolidated Performance Forecast

(Million yen)	First Half				Second Half				Full-Year			
	FY2024	FY2032	Change	% of Change	FY2024	FY2032	Change	% of Change	FY2024	FY2032	Change	% of Change
1 Net Sales	94,900	90,411	+4,489	+5.0%	105,100	99,218	+5,882	+5.9%	200,000	189,629	+10,371	+5.5%
2 Gross Profit (% of Net Sales)	53,900 (56.8%)	51,152 (56.6%)	+2,748	+5.4% (+0.2%)	58,200 (55.4%)	54,630 (55.1%)	+3,570	+6.5% (+0.3%)	112,100 (56.1%)	105,782 (55.8%)	+6,318	+6.0% (+0.3%)
3 SG&A Expenses (% of Net Sales)	48,400 (51.0%)	46,130 (51.0%)	+2,270	+4.9% (+0.0%)	51,200 (48.7%)	48,392 (48.8%)	+2,808	+5.8% (- 0.1%)	99,600 (49.8%)	94,522 (49.8%)	+5,078	+5.4% (+0.0%)
4 Operating Profit (% of Net Sales)	5,500 (5.8%)	5,022 (5.6%)	+478	+9.5% (+0.2%)	7,000 (6.7%)	6,238 (6.3%)	+762	+12.2% (+0.4%)	12,500 (6.3%)	11,260 (5.9%)	+1,240	+11.0% (+0.4%)
5 Recurring Profit (% of Net Sales)	5,300 (5.6%)	4,412 (4.9%)	+888	+20.1% (+0.7%)	6,700 (6.4%)	5,714 (5.8%)	+986	+17.3% (+0.6%)	12,000 (6.0%)	10,126 (5.3%)	+1,874	+18.5% (+0.7%)
6 Net Profit (% of Net Sales)	3,800 (4.0%)	2,862 (3.2%)	+938	+32.8% (+0.8%)	4,200 (4.0%)	3,749 (3.8%)	+451	+12.0% (+0.2%)	8,000 (4.0%)	6,611 (3.5%)	+1,389	+21.0% (+0.5%)
7 EBITDA^{**} (% of Net Sales)	8,000 (8.4%)	7,390 (8.2%)	+610	+8.3% (+0.2%)	9,700 (9.2%)	8,662 (8.7%)	+1,038	+12.0% (+0.5%)	17,700 (8.9%)	16,052 (8.5%)	+1,648	+10.3% (+0.4%)

*Note: EBITDA = operating profit + depreciation and amortization.

FY2024 : Performance Forecasts by Segment

(Million yen)

		First Half				Second Half				Full-Year			
		FY2024	FY2032	Change	% of Change	FY2024	FY2032	Change	% of Change	FY2024	FY2032	Change	% of Change
1	Domestic Total												
	Net Sales	90,934	86,311	+4,623	+5.4%	99,398	93,747	+5,651	+6.0%	190,332	180,058	+10,274	+5.7%
	Operating Profit	6,402	5,990	+412	+6.9%	8,008	7,169	+839	+11.7%	14,410	13,159	+1,251	+9.5%
2	Overseas Total												
	Net Sales	10,158	9,002	+1,156	+12.8%	11,808	10,925	+883	+8.1%	21,966	19,927	+2,039	+10.2%
	Operating Profit	- 78	- 640	+562	↗	399	429	- 30	- 7.0%	321	- 211	+532	↗
3	Consolidated Total												
	Net Sales	94,900	90,411	+4,489	+5.0%	105,100	99,218	+5,882	+5.9%	200,000	189,629	+10,371	+5.5%
	Operating Profit	5,500	5,022	+478	+9.5%	7,000	6,238	+762	+12.2%	12,500	11,260	+1,240	+11.0%

Note: The group breakdown is calculated using simple sums. Consolidated totals are after eliminating intergroup transactions.

The segments previously divided into "Apparel Domestic," "Lifestyle Domestic," and "Overseas Total" have been reclassified into "Domestic Total" and "Overseas Total" beginning in FY02/25.

As the market continues to diversify and the boundaries between apparel and lifestyle are disappearing, the purpose of this change is to bring both segments together and manage them more closely to the actual situation.

FY2024 : Performance Forecasts by Company

(Million yen)

		First Half				Second Half				Full-Year				
		FY2024	FY2023	Change	% of Change	FY2024	FY2023	Change	% of Change	FY2024	FY2023	Change	% of Change	
1	Onward Kashiyama+HD	Net Sales	54,144	51,566	+2,578	+5.0%	60,822	57,925	+2,897	+5.0%	114,966	109,491	+5,475	+5.0%
		Operating Profit	3,412	3,210	+202	+6.3%	5,329	4,979	+350	+7.0%	8,741	8,189	+552	+6.7%
2	Onward Corporate Design	Net Sales	8,634	8,209	+425	+5.2%	9,712	8,979	+733	+8.2%	18,346	17,188	+1,158	+6.7%
		Operating Profit	858	825	+33	+4.0%	735	660	+75	+11.4%	1,593	1,485	+108	+7.3%
3	Island	Net Sales	2,922	2,844	+78	+2.7%	3,080	2,872	+208	+7.2%	6,002	5,716	+286	+5.0%
		Operating Profit	57	- 23	+80	↗	42	- 60	+102	↗	99	- 83	+182	↗
4	Chacott	Net Sales	5,460	5,059	+401	+7.9%	5,040	4,554	+486	+10.7%	10,500	9,613	+887	+9.2%
		Operating Profit	591	565	+26	+4.6%	128	84	+44	+52.4%	719	649	+70	+10.8%
5	Creative Yoko	Net Sales	3,201	2,969	+232	+7.8%	3,701	3,517	+184	+5.2%	6,902	6,486	+416	+6.4%
		Operating Profit	283	235	+48	+20.4%	423	425	- 2	- 0.5%	706	660	+46	+7.0%
6	Yamato	Net Sales	11,429	10,592	+837	+7.9%	11,154	10,445	+709	+6.8%	22,583	21,037	+1,546	+7.3%
		Operating Profit	843	999	- 156	- 15.6%	913	729	+184	+25.2%	1,756	1,728	+28	+1.6%
7	Domestic Subtotal	Net Sales	90,934	86,311	+4,623	+5.4%	99,398	93,747	+5,651	+6.0%	190,332	180,058	+10,274	+5.7%
		Operating Profit	6,402	5,990	+412	+6.9%	8,008	7,169	+839	+11.7%	14,410	13,159	+1,251	+9.5%
8	Europe	Net Sales	5,632	4,832	+800	+16.6%	6,867	6,523	+344	+5.3%	12,499	11,355	+1,144	+10.1%
		Operating Profit	4	- 449	+453	↗	362	605	- 243	- 40.2%	366	156	+210	+134.6%
9	America	Net Sales	1,179	936	+243	+26.0%	1,151	954	+197	+20.6%	2,330	1,890	+440	+23.3%
		Operating Profit	- 126	- 231	+105	↗	- 19	- 183	+164	↗	- 145	- 414	+269	↗
10	Asia	Net Sales	3,347	3,234	+113	+3.5%	3,790	3,448	+342	+9.9%	7,137	6,682	+455	+6.8%
		Operating Profit	44	40	+4	+10.0%	56	7	+49	+700.0%	100	47	+53	+112.8%
11	Overseas Subtotal	Net Sales	10,158	9,002	+1,156	+12.8%	11,808	10,925	+883	+8.1%	21,966	19,927	+2,039	+10.2%
		Operating Profit	- 78	- 640	+562	↗	399	429	- 30	- 7.0%	321	- 211	+532	↗
12	Consolidated Total	Net Sales	94,900	90,411	+4,489	+5.0%	105,100	99,218	+5,882	+5.9%	200,000	189,629	+10,371	+5.5%
		Operating Profit	5,500	5,022	+478	+9.5%	7,000	6,238	+762	+12.2%	12,500	11,260	+1,240	+11.0%

Note: The group breakdown is calculated using simple sums. Consolidated totals are after eliminating intergroup transactions.

Onward Corporate Design's previous year figures (2H) include Onward Creative Center's results in addition to Onward Trading results.

FY2023 : SG&A Expenses / Items that Affect Net Profit ONWARD

(Million yen)	FY2023	FY2022	YoY (% of Change)
1 Personnel	35,387	35,036	+1.0%
2 Rent	25,336	24,499	+3.4%
3 Transportation	6,448	6,238	+3.4%
4 Promotion and Advertising	6,607	5,505	+20.0%
5 Depreciation	3,194	3,595	- 11.2%
6 Other	17,550	16,664	+5.3%
7 Total SG&A Expenses	94,522	91,537	+3.3%

[Items that Affect Net Profit]

- Non-operating profit from interest income, dividends income, etc., was 0.5 billion yen.
- Non-operating expenses due to foreign exchange losses, interest expenses, etc. were 1.6 billion yen.
- Extraordinary gains on sales of investment securities were 0.4 billion yen.
- Extraordinary loss was 4.4 billion yen due to impairment loss, etc.
- The income tax ratio decreased because taxable income is expected to increase in the future due to better performance and deferred tax assets were recorded.
- As a result, net profit was 6.6 billion yen.

(Million yen)	FY2023	FY2022	YoY (% of Change)
8 Operating Profit	11,260	5,214	+116.0%
9 Non-Operating Profit	494	1,380	- 64.2%
10 Interest income	283	233	+21.5%
11 Foreign exchange gains		789	-
12 Subsidy income		134	-
13 Other	211	220	- 4.1%
14 Non-Operating Loss	1,628	1,274	+27.8%
15 Interest expenses	896	363	+146.8%
16 Foreign exchange loss	109		-
17 Share of loss of entities accounted for using equity	249	46	+441.3%
18 Other	373	863	- 56.8%
19 Total Non-Operating Profit/Loss	-1,133	106	-
20 Recurring Profit	10,126	5,319	+90.4%
21 Extraordinary Profit	433	1,878	- 76.9%
22 Gain on sales of shares of subsidiaries and associates		1,300	-
23 Gain on sales of investment securities	363	527	- 31.1%
24 Other	69	50	+38.0%
25 Extraordinary Loss	4,395	3,388	+29.7%
26 Impairment loss	3,586	2,906	+23.4%
27 Other	809	482	+67.8%
28 Extraordinary Profit/Loss	-3,962	-1,510	-
29 Profit Before Income Taxes	6,164	3,809	+61.8%
30 Income Taxes - Current	-713	698	-
31 Profit (loss) attributable to non-controlling interests	266	49	+442.9%
32 Net Profit	6,611	3,061	+115.9%

FY2023 : Consolidated Balance Sheet

(Billion yen)	End-FY2023	End-FY2022	Change	Reasons for change
1 Total Assets	171.3	159.1	+12.2	
2 Current Assets	73.4	62.2	+11.2	
3 Cash and Deposits	14.1	13.8	+0.3	
4 Accounts Receivable-trade	15.9	13.9	+2.0	Increase due to higher net sales
5 Inventory	38.9	30.7	+8.2	Increase due to active purchase
6 Non-current Assets	97.9	96.9	+1.0	
7 Property, Plant and Equipment	50.4	53.1	-2.7	Decrease due to impairment of fixed assets
8 Intangible Assets	8.8	9.1	-0.3	
9 Investments and Other Assets	38.6	34.7	+3.9	While cross-shareholdings declined, newly acquired deferred tax assets from affiliated companies increased
10 Total Liabilities	86.3	74.1	+12.2	
11 Accounts Payable-trade	22.6	21.4	+1.2	
12 Borrowings	37.6	27.2	+10.4	Increase due to new borrowings
13 Other	26.1	25.5	+0.6	
14 Total Net Assets	84.9	85.0	-0.1	
15 Shareholders' Equity Ratio	46.6%	47.0%	- 0.4%	
16 Current Ratio	117.7%	117.2%	+0.5%	

FY2023 : Results by Groups

(Million yen)

		Full-Year Results				
		FY2023	FY2022	Change	% of Change	
Onward Kashiyama + HD	1	Net Sales	109,491	101,109	+8,382	+8.3%
	2	Gross Profit	65,428	60,068	+5,360	+8.9%
		(% of Net Sales)	(59.8%)	(59.4%)		(+0.3%)
	3	SG&A Expenses	57,239	55,544	+1,695	+3.1%
		(% of Net Sales)	(52.3%)	(54.9%)		(- 2.7%)
	4	Operating Profit	8,189	4,524	+3,665	+81.0%
		(% of Net Sales)	(7.5%)	(4.5%)		(+3.0%)
Domestic Subtotal (Excl. Onward Kashiyama + HD)	5	Net Sales	70,567	66,342	+4,225	+6.4%
	6	Gross Profit	35,076	32,516	+2,560	+7.9%
		(% of Net Sales)	(49.7%)	(49.0%)		(+0.7%)
	7	SG&A Expenses	30,106	29,299	+807	+2.8%
		(% of Net Sales)	(42.7%)	(44.2%)		(- 1.5%)
	8	Operating Profit	4,970	3,217	+1,753	+54.5%
		(% of Net Sales)	(7.0%)	(4.8%)		(+2.2%)
Overseas Subtotal	9	Net Sales	19,927	17,250	+2,677	+15.5%
	10	Gross Profit	9,158	7,552	+1,606	+21.3%
		(% of Net Sales)	(46.0%)	(43.8%)		(+2.2%)
	11	SG&A Expenses	9,369	8,642	+727	+8.4%
		(% of Net Sales)	(47.0%)	(50.1%)		(- 3.1%)
	12	Operating Profit	- 211	- 1,090	+879	↗
		(% of Net Sales)	-	-		

FY2024 Full-Year : Forecasts by Group

(Million yen)

		First Half				Second Half				Full-Year				
		FY2024	FY2023	Change	% of Change	FY2024	FY2023	Change	% of Change	FY2024	FY2023	Change	% of Change	
Onward Kashiyama + HD	1	Net Sales	54,144	51,566	+2,578	+5.0%	60,822	57,925	+2,897	+5.0%	114,966	109,491	+5,475	+5.0%
	2	Gross Profit	32,952	31,245	+1,707	+5.5%	36,857	34,183	+2,674	+7.8%	69,809	65,428	+4,381	+6.7%
		(% of Net Sales)	(60.9%)	(60.6%)		(+0.3%)	(60.6%)	(59.0%)		(+1.6%)	(60.7%)	(59.8%)		(+0.9%)
	3	SG&A Expenses	29,540	28,035	+1,505	+5.4%	31,528	29,204	+2,324	+8.0%	61,068	57,239	+3,829	+6.7%
	(% of Net Sales)	(54.6%)	(54.4%)		(+0.2%)	(51.8%)	(50.4%)		(+1.4%)	(53.1%)	(52.3%)		(+0.8%)	
	4	Operating Profit	3,412	3,210	+202	+6.3%	5,329	4,979	+350	+7.0%	8,741	8,189	+552	+6.7%
	(% of Net Sales)	(6.3%)	(6.2%)		(+0.1%)	(8.8%)	(8.6%)		(+0.2%)	(7.6%)	(7.5%)		(+0.1%)	
Domestic Subtotal (Excl. Onward Kashiyama + HD)	5	Net Sales	36,790	34,745	+2,045	+5.9%	38,576	35,822	+2,754	+7.7%	75,366	70,567	+4,799	+6.8%
	6	Gross Profit	18,528	17,626	+902	+5.1%	18,823	17,450	+1,373	+7.9%	37,351	35,076	+2,275	+6.5%
		(% of Net Sales)	(50.4%)	(50.7%)		(-0.3%)	(48.8%)	(48.7%)		(+0.1%)	(49.6%)	(49.7%)		(-0.1%)
	7	SG&A Expenses	15,538	14,846	+692	+4.7%	16,144	15,260	+884	+5.8%	31,682	30,106	+1,576	+5.2%
	(% of Net Sales)	(42.2%)	(42.7%)		(-0.5%)	(41.8%)	(42.6%)		(-0.8%)	(42.0%)	(42.7%)		(-0.7%)	
	8	Operating Profit	2,990	2,780	+210	+7.6%	2,679	2,190	+489	+22.3%	5,669	4,970	+699	+14.1%
	(% of Net Sales)	(8.1%)	(8.0%)		(+0.1%)	(6.9%)	(6.1%)		(+0.8%)	(7.5%)	(7.0%)		(+0.5%)	
Overseas Subtotal	9	Net Sales	10,158	9,002	+1,156	+12.8%	11,808	10,925	+883	+8.1%	21,966	19,927	+2,039	+10.2%
	10	Gross Profit	4,678	4,047	+631	+15.6%	5,496	5,111	+385	+7.5%	10,174	9,158	+1,016	+11.1%
		(% of Net Sales)	(46.1%)	(45.0%)		(+1.1%)	(46.5%)	(46.8%)		(-0.3%)	(46.3%)	(46.0%)		(+0.3%)
	11	SG&A Expenses	4,756	4,687	+69	+1.5%	5,097	4,682	+415	+8.9%	9,853	9,369	+484	+5.2%
	(% of Net Sales)	(46.8%)	(52.1%)		(-5.3%)	(43.2%)	(42.9%)		(+0.3%)	(44.9%)	(47.0%)		(-2.1%)	
	12	Operating Profit	- 78	- 640	+562	↗	399	429	- 30	- 7.0%	321	- 211	+532	↗
	(% of Net Sales)	-	-			(3.4%)	(3.9%)		(-0.5%)	(1.5%)	-			

The logo for Onward Holdings Co., Ltd. features the word "ONWARD" in a large, blue, serif font. Two horizontal yellow bars cross through the "O" and "D" respectively. Below this, the text "ONWARD HOLDINGS CO., LTD." is written in a smaller, black, sans-serif font.

ONWARD

ONWARD HOLDINGS CO., LTD.

The information in this presentation is not a solicitation to purchase or sell Onward Holdings stock. Opinions and forecasts stated herein represent the judgments of the company at the time this presentation was prepared. Onward Holdings makes no guarantee regarding the accuracy of the information in this presentation and may make revisions without prior notice. Onward Holdings and the providers of this information assume no responsibility whatsoever for any losses incurred in association with this information.