

Corporate / Investor Information

As of February 28, 2019

Head Office 10-5, Nihonbashi 3-chome, Chuo-ku, Tokyo 103-8239, Japan
 Tel: (81) 3-4512-1020
 Fax: (81) 3-4512-1021
 URL: <http://www.onward-hd.co.jp/site/english/>

Established September 1947

Capital ¥30,080 million

Common Stock Authorized—400,000,000 shares
 Issued—157,921,669 shares

Note: The total number of issued and outstanding shares included 20,052,156 shares of treasury stock.

Number of Shareholders 16,201

Stock Exchange Listings Tokyo, Nagoya

Transfer Agent Mitsubishi UFJ Trust & Banking Co., Ltd.
 1-1, Nikkocho, Fuchu, Tokyo 183-0044, Japan

Number of Employees (Consolidated) 4,643

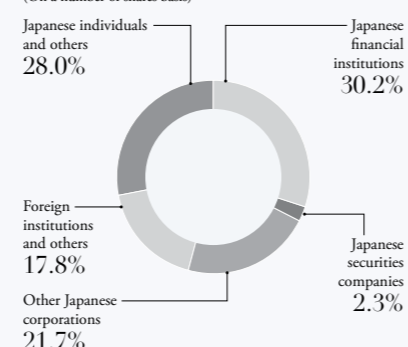
Major Shareholders

	Number of Shares Held (Thousands)	Percentage of Total Shares Issued (%)
Kashiyama Scholarship Foundation	8,710	6.3
The Master Trust Bank of Japan, Ltd. (Trust account)	6,976	5.0
BNYMSANV AS AGENT/CLIENTS LUX UCITS NON TREATY 1	6,078	4.4
Japan Trustee Services Bank, Ltd. (Trust account)	5,714	4.1
Nippon Life Insurance Company	4,671	3.3
Onward Holdings Customers' Shareholding Association	4,556	3.3
Japan Trustee Services Bank, Ltd. (Trust account 9)	4,511	3.2
The Dai-ichi Mutual Life Insurance Company, Ltd.	4,200	3.0
Sumitomo Mitsui Banking Corporation	2,931	2.1
SMBC Nikko Securities Inc.	2,785	2.0

Notes:
 1. The Company holds 20,052,156 shares of treasury stock. Treasury stock is not included in the above Major Shareholders information.
 2. The percentage of total shares issued is calculated after deducting 20,052,156 shares of treasury stock.

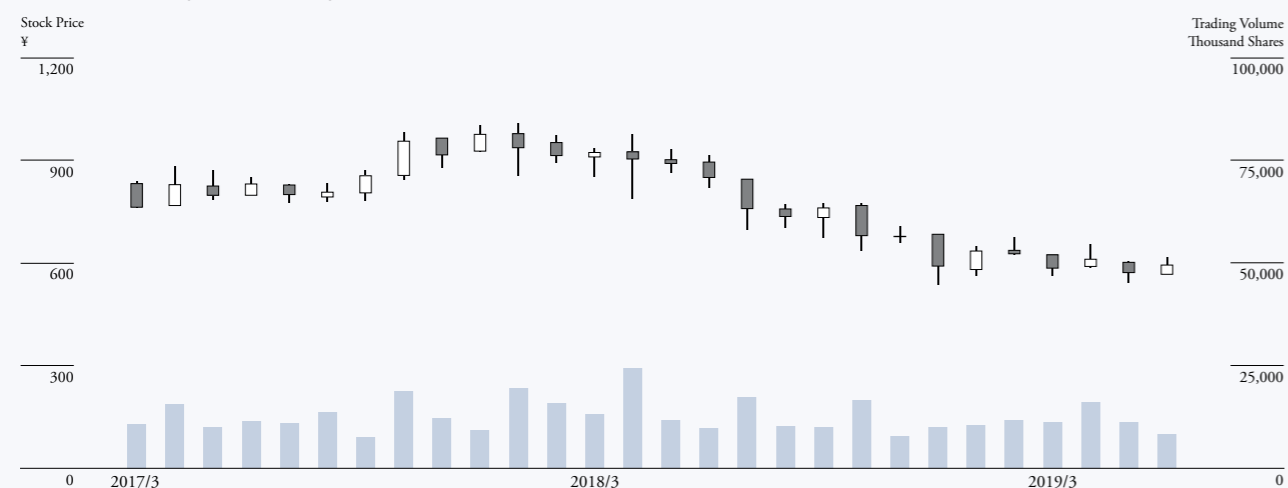
Distribution of Ownership among Shareholders

(On a number of shares basis)



Note: Data regarding Japanese individuals and others includes treasury stock.

Stock Price Range and Trading Volume



History

1927	February	Junzo Kashiyama established Kashiyama Trading.
1947	September	Established Kashiyama Co., Ltd., in Oimatsu-cho, Kita-ku, Osaka City, Osaka (later relocated to Honmachi, Higashi-ku, in 1952).
1960	October	Listed on second sections of Tokyo, Osaka, and Nagoya stock exchanges.
1962	April	Established Onward Sales Co., Ltd. (formerly Oak Co., Ltd.; currently Onward Trading Co., Ltd.).
1964	July	Listing was transferred to first sections of Tokyo, Osaka, and Nagoya stock exchanges.
1966	September	Transferred head office from Honmachi, Kita-ku, Osaka, to Nihonbashi, Chuo-ku, Tokyo.
1972	July	Established Onward Transport Co., Ltd. (currently Across Transport Co., Ltd.).
	September	Established Onward Kashiyama U.S.A. INC.
1973	February	Established Onward Kashiyama France S.A.
1974	February	Established Onward Kashiyama Italia S.p.A. (currently Onward Italia S.p.A.).
1986	October	Acquired J. Press, Inc.
1988	February	Established Onward Kashiyama Hong Kong Ltd.
	September	Company name changed to Onward Kashiyama Co., Ltd. (currently Onward Holdings Co., Ltd.).
1989	December	Established Onward Kashiyama U.K. Ltd.
1990	January	Acquired GIBO' S.p.A. (name was changed to GIBO'Co S.p.A. in April 1994).
	July	Acquired Chacott Co., Ltd.
1991	February	Launched Onward Research and Development Institute.
1992	May	Opened Onward Agana Beach Hotel in Guam (currently Onward Beach Resort Guam, Inc.).
1994	May	Established Bus Stop Co., Ltd.
1995	June	Established Shanghai Onward Fashion Co., Ltd.
1997	June	Established Onward Kashiyama Korea Co., Ltd.
2004	January	Acquired Erika s.r.l.
2005	May	Acquired Project Sloane Ltd. (Joseph Group).
	July	Acquired Iris S.p.A.
2006	October	Acquired Mangilao Golf Club (currently Onward Mangilao Guam, Inc.).
2007	April	Onward Fashion Trading (Shanghai) Co., Ltd., increased its capital and changed its name to Onward Fashion Trading (China) Co., Ltd.
	May	Acquired Frassinetti s.r.l.
	June	Established J. Direction Co., Ltd.
	September	Changed to holding company structure through corporate restructuring under new company name, Onward Holdings Co., Ltd.
		Established Onward Kashiyama Co., Ltd., and Onward Trading Co., Ltd.
	October	Acquired Corporate s.r.l.
2008	October	Acquired Creative Yoko Co., Ltd.
		Acquired Jil Sander A.G.
2009	December	Acquired controlling interest in Island Co., Ltd.
2010	June	Established Onward Kashiyama Singapore Pte. Ltd.
2011	August	Established Onward Kashiyama Vietnam Ltd.
2012	April	Acquired controlling interest in Birz Group, including Birz Association Ltd.
	May	Established Onward Trading (Shanghai) Co., Ltd.
	December	Established Charles & Keith Japan Co., Ltd.
2013	February	Acquired Sakula Inc.
	June	Established Onward Luxury Group S.p.A.
2014	March	Established Onward Global Fashion Co., Ltd.
	November	Completed Onward Park Building (head office in Nihonbashi district of Tokyo).
2015	March	Michinobu Yasumoto became president and representative director.
	September	Established Onward J Bridge Co., Ltd. (a joint venture company with Laox Co., Ltd.).
2016	March	Acquired La Maison Moreau S.A.S.
	April	Acquired Tiaclasse Inc.
	August	Converted Onward Kaisei (Dalian) Co., Ltd. (currently Kashiyama (Dalian) Co., Ltd.), into a wholly owned subsidiary through acquisition of stock.
2017	January	Acquired Kokobuy Inc. and Innovate Organics, Inc.
	December	Acquired Mulberry Japan Co., Ltd. (a joint venture company with Mulberry Group plc).
2018	March	Acquired General Clothing Co., Ltd. (currently Kashiyama Saga Co., Ltd.).
2019	March	Acquired Yamato Co., Ltd.